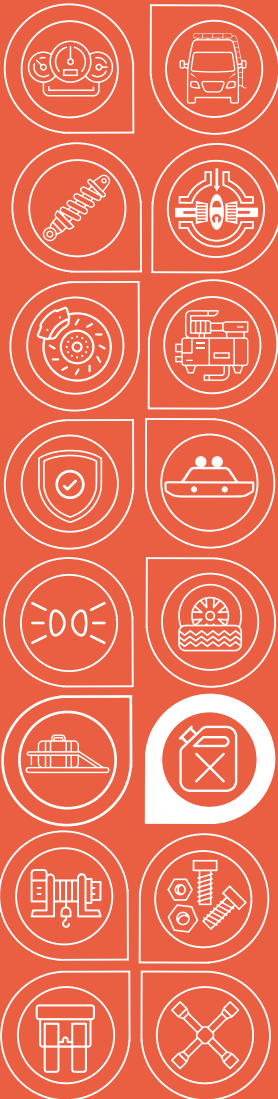




**AGILE
OFFROAD**
SMARTER THAN DIRT



Installation Guide

MILES TO ZERO MODULES FOR 40
& 45 GAL S&B FUEL TANKS
(2019+ SPRINTERS)

AOR11 / AOR12

FUEL MODULE UPGRADE FOR ACCURATE DISTANCE-TO-EMPTY ON OVERSIZED TANKS

MILES TO ZERO MODULES FOR 40 & 45 GAL S&B FUEL TANKS (2019+ SPRINTERS)



Restore your Sprinter's miles-to-empty accuracy after a larger tank install. This module includes J51 programming, prioritizing the actual fuel level in the tank to deliver accurate range readings, even when fuel is consumed while parked, such as with diesel heaters.

SKU

AOR11 (45 & 47 Gallon)

AOR12 (40 Gallon)

PARTS INCLUDED

1 x MTZ Fuel Module VS30 J51

TOOLS NEEDED

Clip Removal Tool

10mm Socket/Wrench

13mm Socket/Wrench

15mm Socket/Wrench

Teflon Tape

INSTALLATION TIME

2 Hours

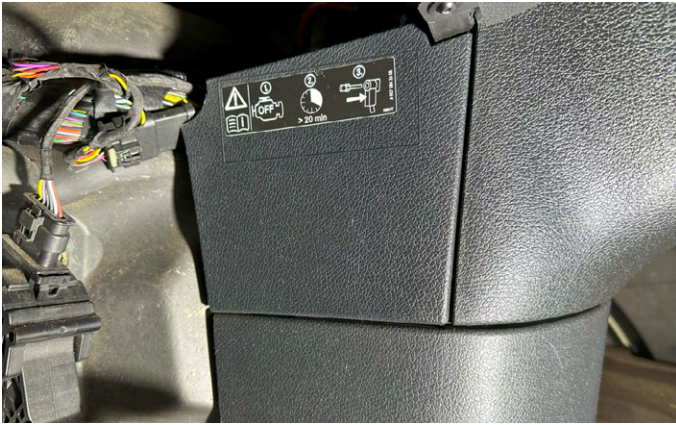
NOTE

ACO1 Pre-Requisite: S&B tanks built before October 2023 may require extended float arm. Contact your Agile Offroad Representative for more information.

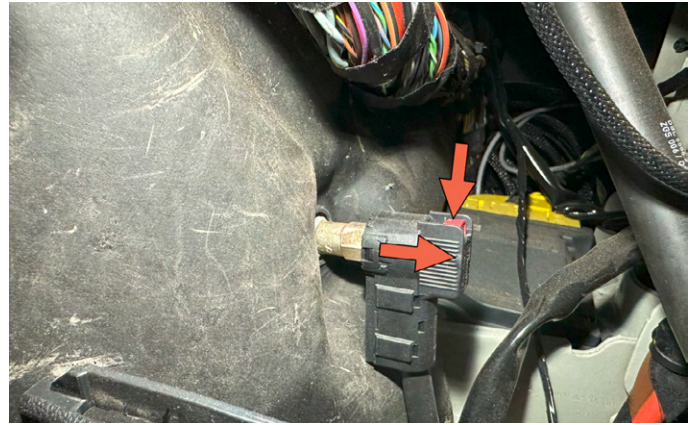
WARNING:

Working on a vehicle's electrical system requires caution due to the risk of electrical shock, fire, and potential damage to the vehicle's electronics. Disconnect the battery before working on any electrical components.

INSTALLATION GUIDE



1. Make sure the van is off and then wait 20 minutes before disconnecting the battery. Remove the cover located right of the accelerator pedal by pulling out and up on the top of the cover.



2. Press and hold the red button of the chasis ground cable plug while pulling out on plug. Completely remove plug from firewall pin.

Note: Some vans are equipped with an auxiliary battery in the engine compartment or in the seat base; disconnect all batteries.



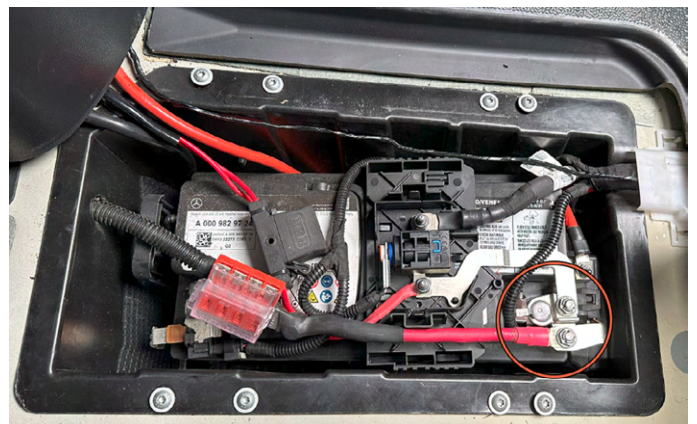
3. Use a T25 Torx bit to remove the two floor pad trim screws.



4. Remove the floor mat and then use a T30 Torx bit to remove the four battery cover screws. Completely remove battery cover.

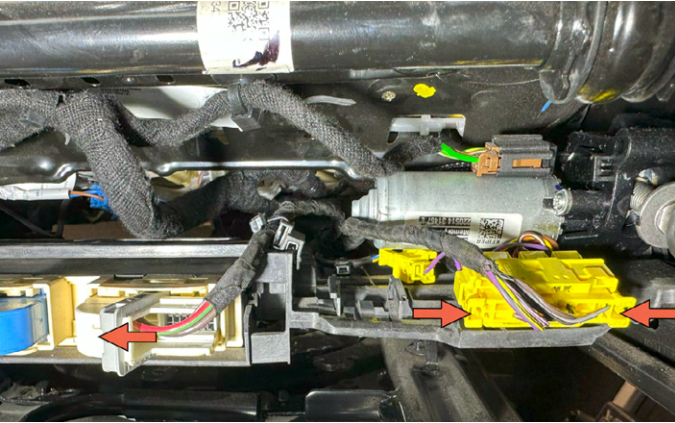


5. Remove the red positive battery post cover. Take a picture and document where any existing power cables are connected.



6. Use a 10mm and a 13mm socket to completely disconnect the positive battery post cables.

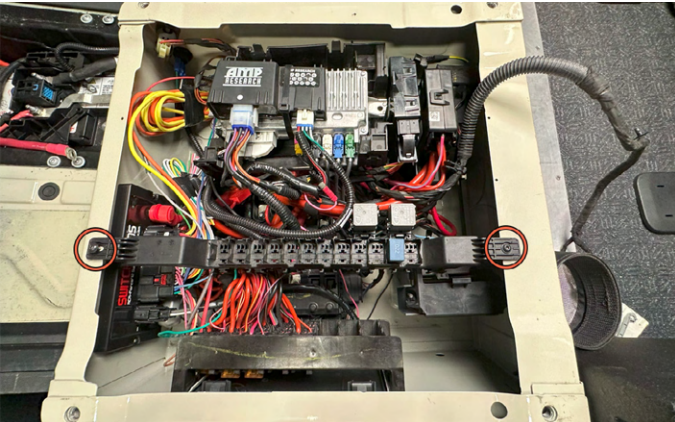
INSTALLATION GUIDE



7. Unplug the power and sensor connectors located under the seat. To disconnect the yellow connector, press the two outer tabs in while pulling out on the connector. To disconnect the white connector, push on the tab and swing the grey arm to unlock connector.



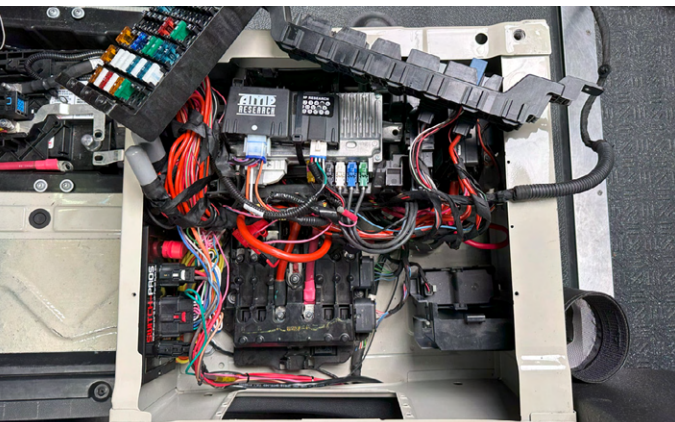
8. Use an E12 socket to remove the four seat mounting bolts. Before attempting to remove the seat, carefully unrout the previously disconnected electrical harness from the base of the seat. Completely remove the seat. **Note:** The seat is heavy and should be removed with the help of a friend



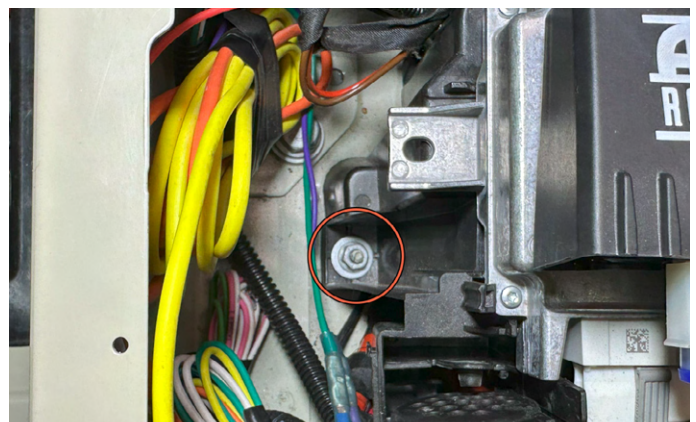
9. Use a T20 Torx bit to remove the two relay mounting bracket screws.



10. Use a T20 Torx bit to remove the six fuse panel screws.

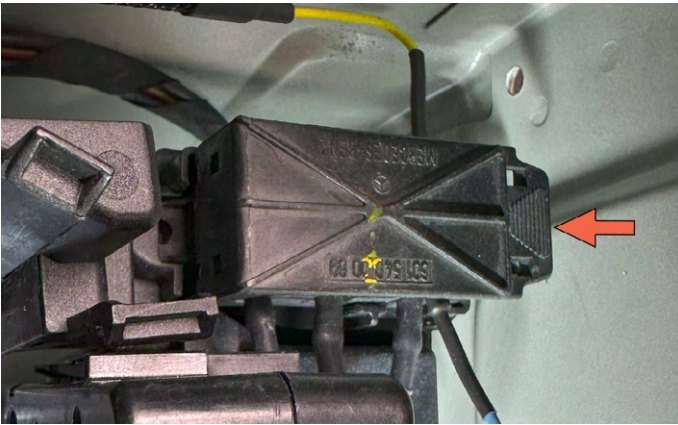


11. Carefully remove the relay bracket and fuse panel and set outside the seat base.

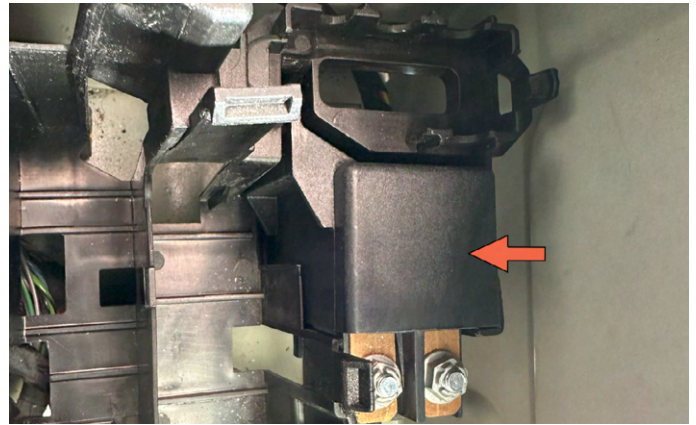


12. Use a 10mm socket to remove the front seat base control module support bracket nut.

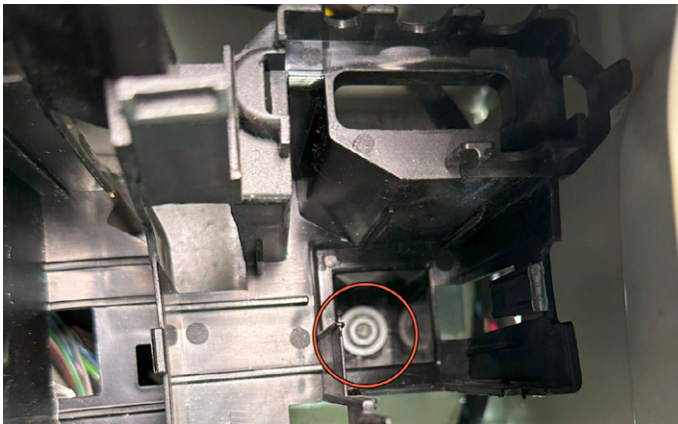
INSTALLATION GUIDE



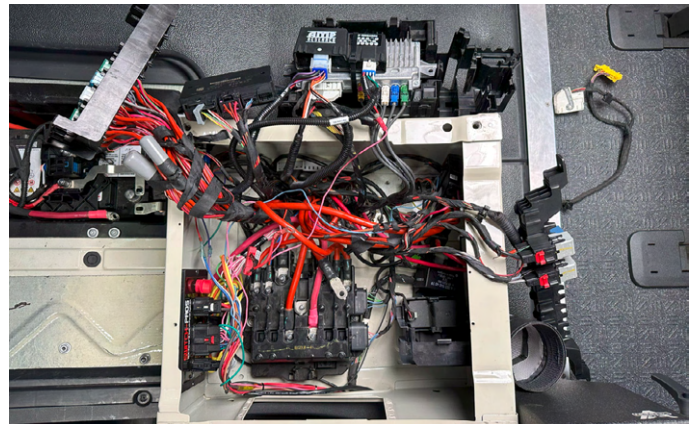
13. Remove the EK1 three terminal block by pushing back on the rear tab while pulling up on the terminal block.



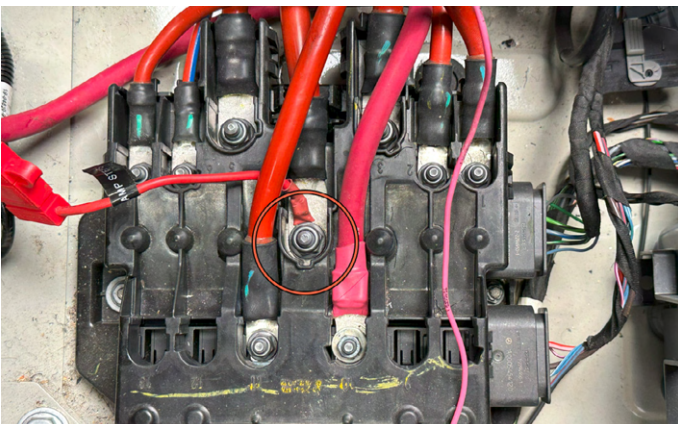
14. If equipped, pull up on the auxiliary battery relay and remove from the module support bracket.



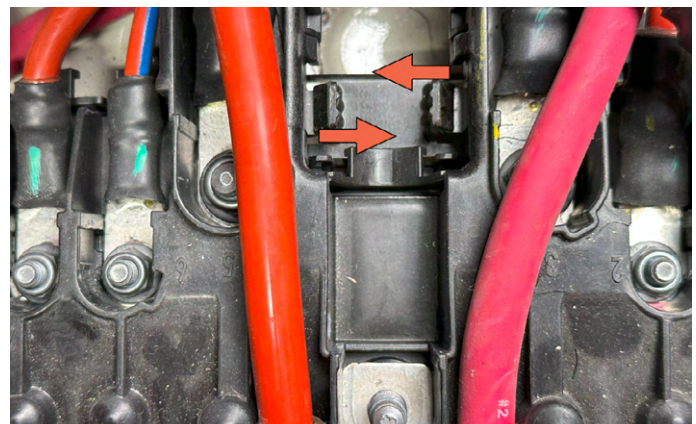
15. Use a 10mm socket to remove the rear seat base control module support bracket nut.



16. Carefully remove the control module bracket assembly and place it outside the seat base.

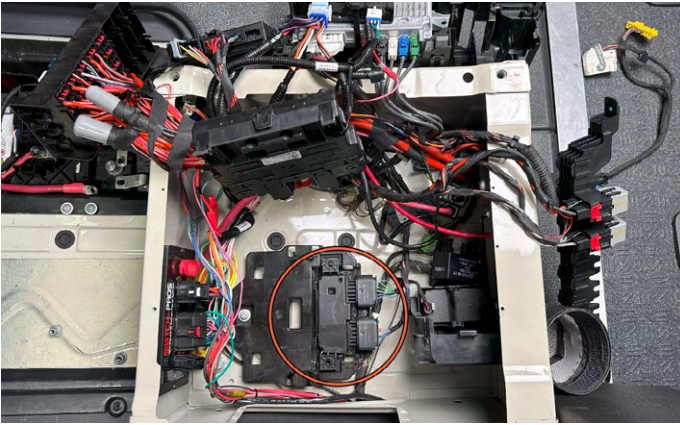


17. Use a 10mm socket to remove the #4 center positive battery cable nut.

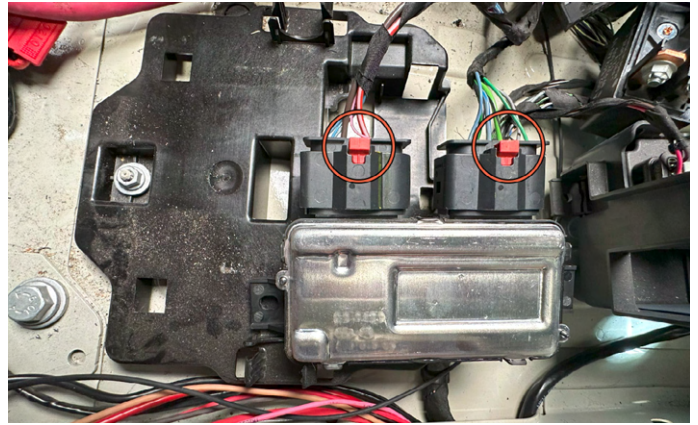


18. Remove the battery cable and then press in on the two tabs while pulling up on the cable distribution assembly.

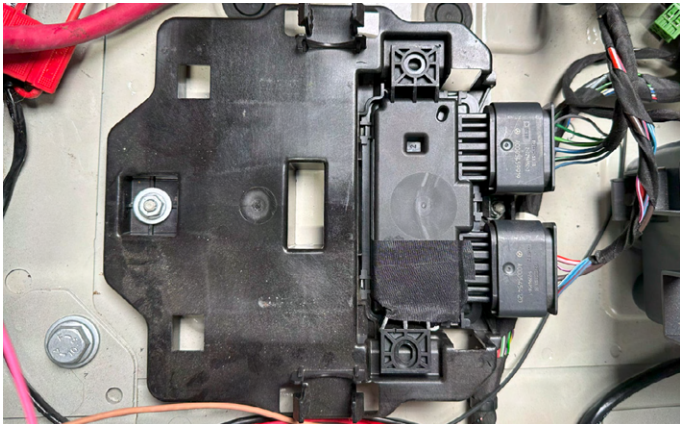
INSTALLATION GUIDE



19. The power cable distribution block to expose the fuel module.



20. Remove the fuel module from the support bracket. To disconnect the two connectors from the module, first pull out on the red tab then push down on the tab while pulling out the connector.



21. Connect the two connectors to the new MTZ Fuel Module and reinstall the module to the support bracket. Reinstall previously removed electrical components following steps 1-19.



22. Make sure all electrical components and seat are installed and connected before attempting to start the van. The Fuel Consumption display can be found on the Trip Menu. Refer to the owner's manual if necessary. The miles to empty is shown under Range. Range combines the fuel level and estimated fuel consumption to calculate the distance you can likely drive.



 **AGILE
OFFROAD**
SMARTER THAN DIRT



Interior



Exterior



Suspension



Air Locker &
Drivetrain



Steering &
Brakes



Air
Compressors



Armor &
Protection



Bumpers



Lighting



Wheels &
Tires



Storage &
Racks



Water &
Fuel Tanks



Winches &
Recovery



Replacement
Parts &
Accessories



Electrical



Tools

