

Please read the instructions carefully before installing the product.

IOPEDAL






IOPEDAL - HIGH IDLE installation instruction Mercedes Benz - 2.0 CDI Diesel (OM 654)

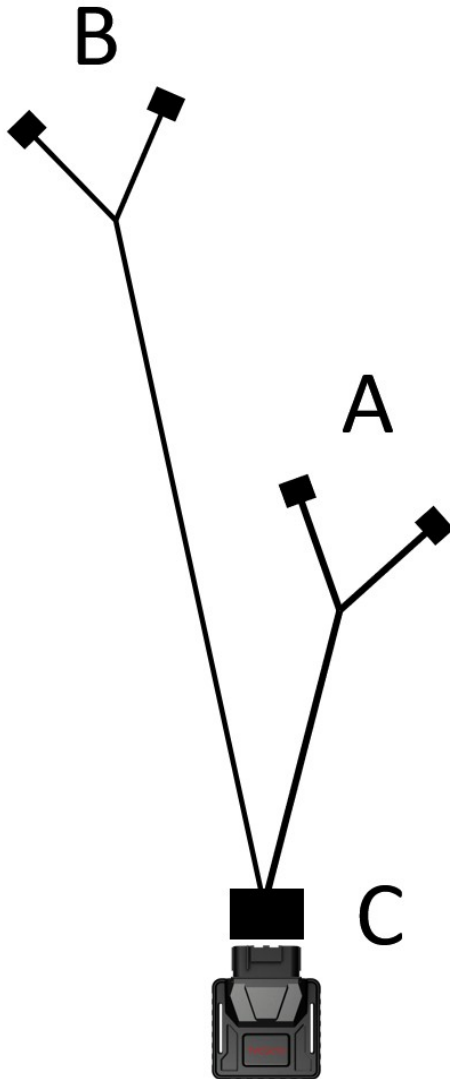
Table of Content

Installation of the IOPEDAL High Idle.....	3
Disconnect the accelerator pedal connector.....	4
IOPEDAL Connect the cable adapter.....	6
IOPEDAL Connect the module.....	7
Locate the firewall grommet.....	8
Prepare access to the camshaft sensor (engine compartment / air filter housing).....	9
Oil filler neck.....	10
12-Volt Connection.....	11
Connector unit.....	12
Air intake & mass air flow sensor.....	13
Locate the camshaft sensor.....	14
Connect the camshaft sensor and route the cable.....	15
.....	20
Securing the IOPEDAL module and cable.....	21
Teaching the IOPEDAL (Auto-Ranging Function).....	23
Contact.....	24
Imprint.....	24

Explanation of symbols

-  **Information**
-  **Important notes**
-  **Tips and tricks**

Installation of the IOPEDAL High Idle



This step-by-step guide describes the proper installation of the IOPEDAL High Idle System and provides detailed instructions for routing and connecting the wiring harness to the designated connection points:

A – Accelerator pedal connector (6-pin),

B – Camshaft sensor (3-pin), and

C – IOPEDAL module connection.

Carry out all installation steps with the utmost care and ensure that the ignition is completely switched off before starting the installation.

After switching off the ignition, wait at least 10 minutes before beginning the installation to ensure the system has fully powered down.

Use appropriate tools and avoid damaging connectors or cables.

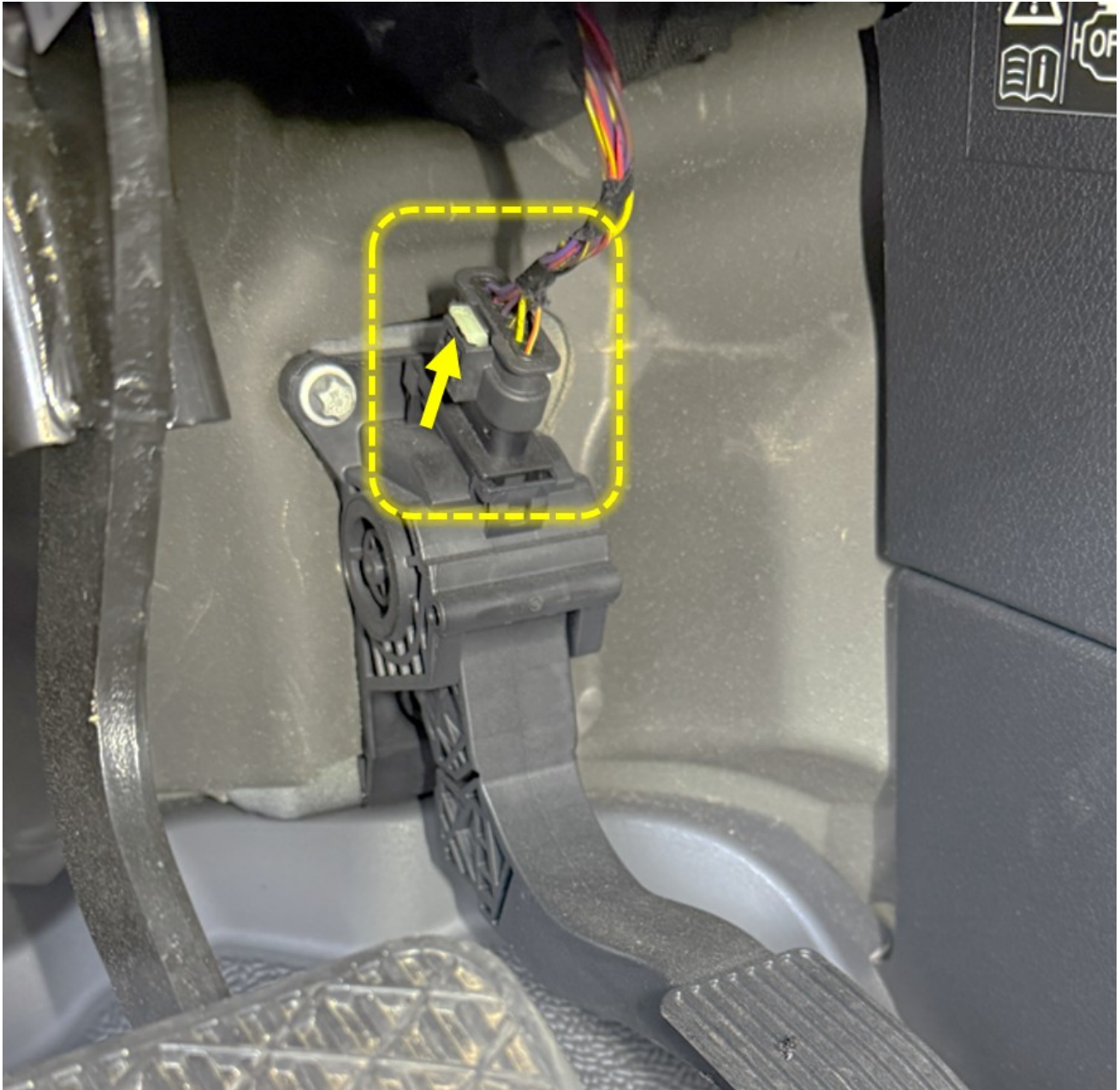
Important Note:



In vehicles equipped with keyless entry, the accelerator pedal may be activated as soon as the key holder approaches the vehicle. In this case, ensure that the key is placed well out of range of the vehicle to prevent unintentional activation of the accelerator pedal.

Disconnect the accelerator pedal connector

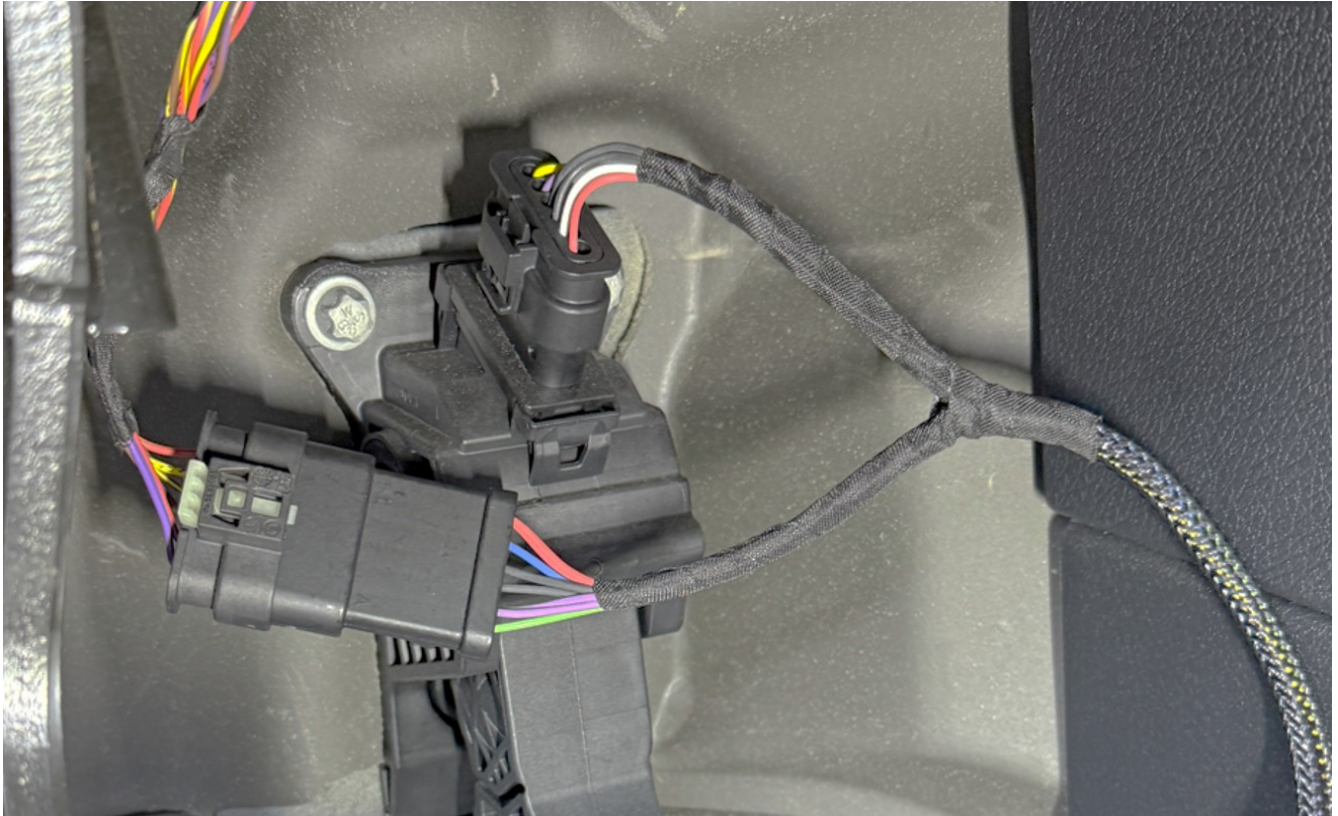
First, release the safety lock on the accelerator pedal connector. Then fully disconnect the connector.





IOPEDAL Connect the cable adapter

Connect the two 6-pin connectors of the supplied cable adapter to the corresponding vehicle connectors. Ensure that the locking mechanisms of the connectors engage securely with an audible and tactile click.



Important Note:



It is essential to ensure that the cable and the control unit (ECU) are mounted in such a way that they cannot fall into the footwell or interfere with the movement of the pedals or the steering column. This ensures a safe installation and prevents potential hazards while driving.

IOPEDAL Connect the module

Insert the module connector of the cable adapter into the IOPEDAL module and lock the connector in place.



Important Note:



It is essential to ensure that the cable and the control unit (ECU) are mounted in such a way that they cannot fall into the footwell or interfere with the movement of the pedals or the steering column. This ensures a safe installation and prevents potential hazards while driving.

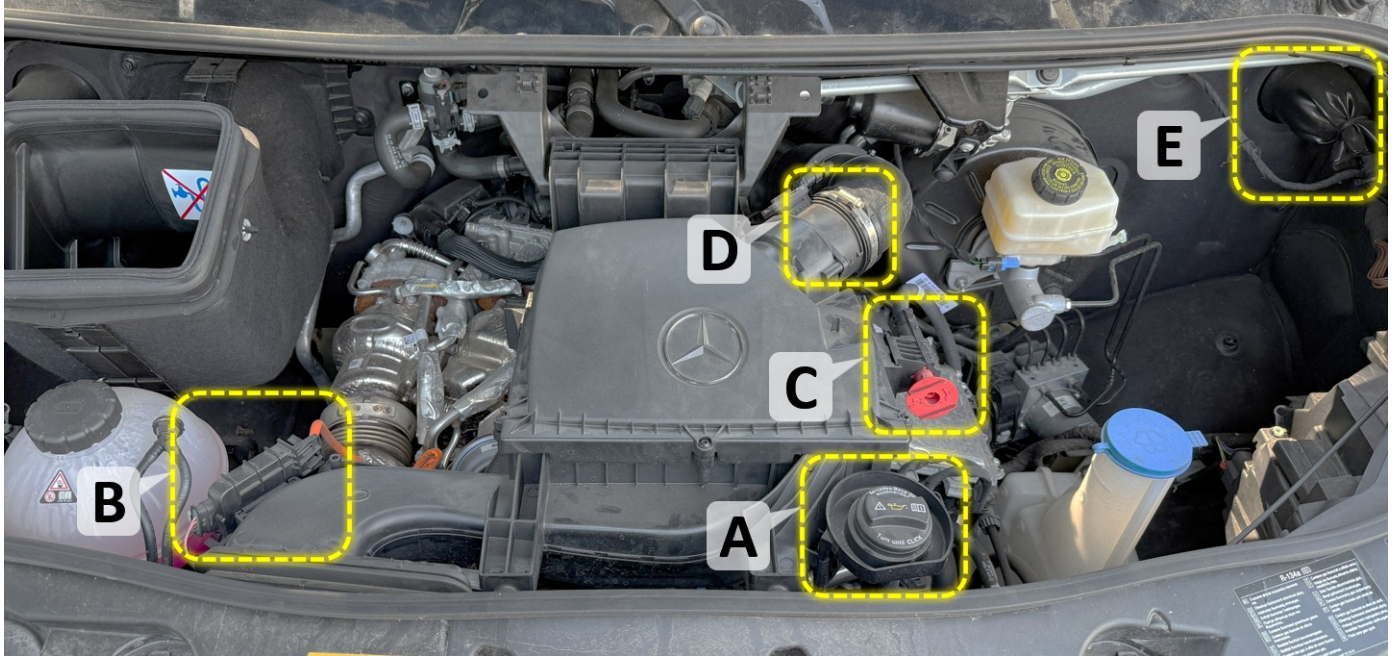
Locate the firewall grommet

The cable grommet for the camshaft sensor is located, as shown in the picture, at the upper left of the driver's footwell. Carefully route the corresponding connector through the grommet into the engine compartment.



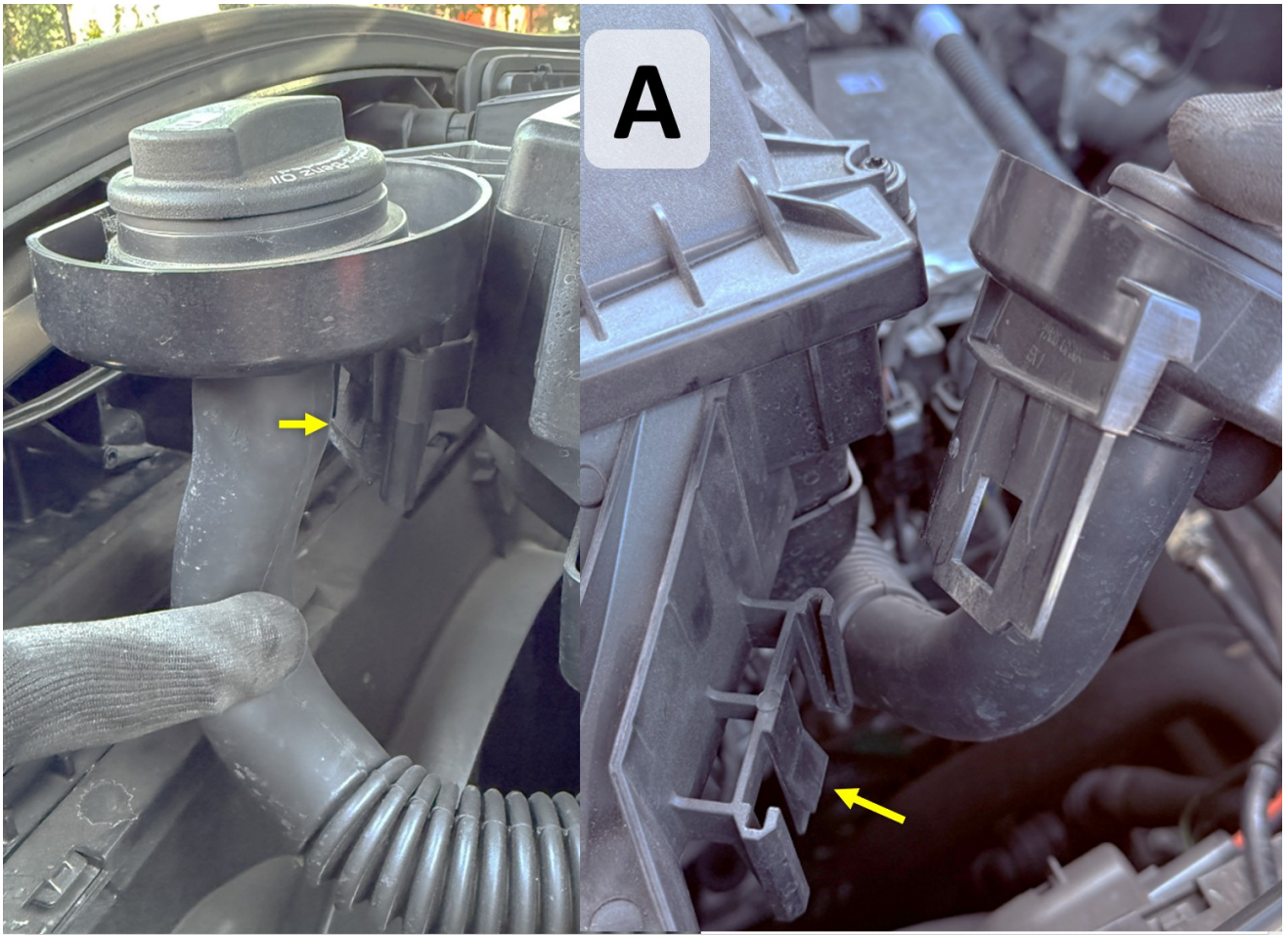
Prepare access to the camshaft sensor (engine compartment / air filter housing)

To access the camshaft sensor, the air filter housing must be removed. Remove the following components in the order specified:



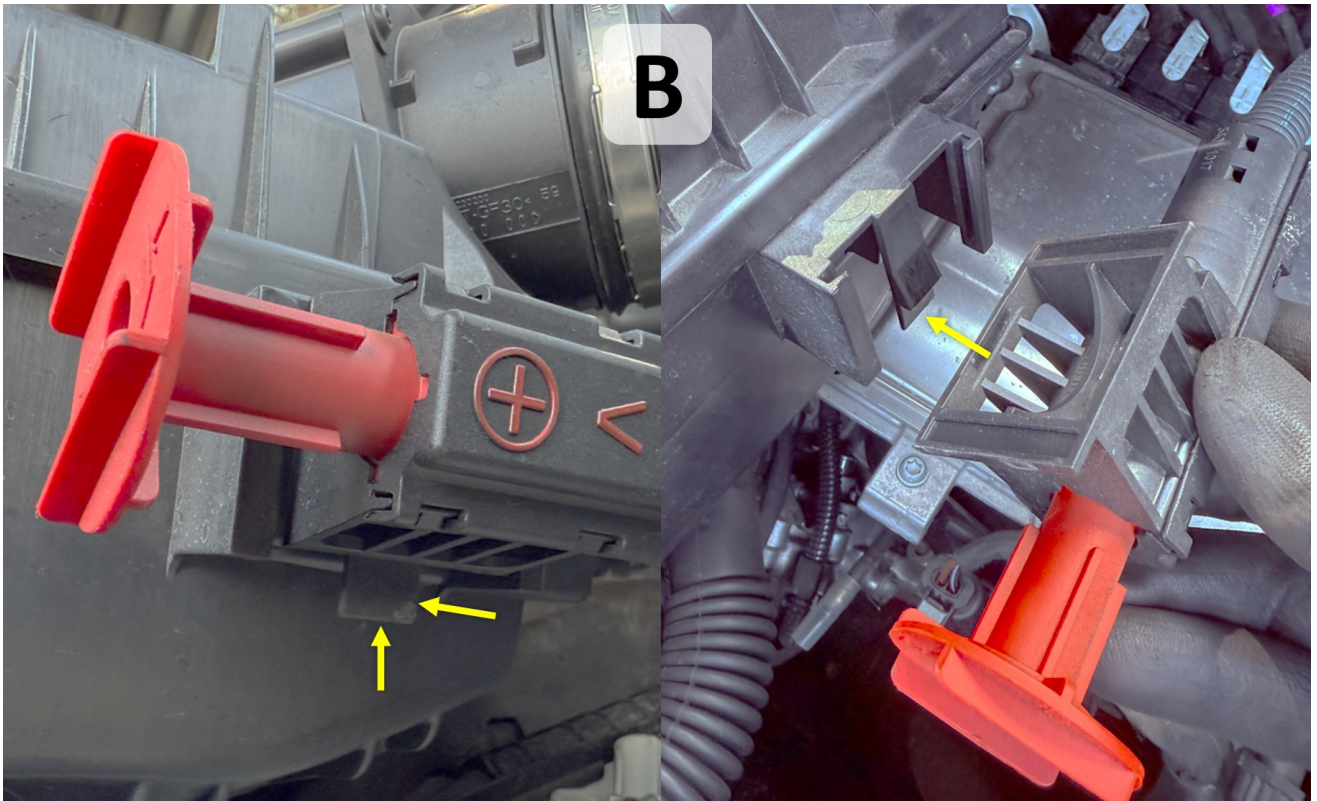
Oil filler neck

Release the clip lock and pull straight out.



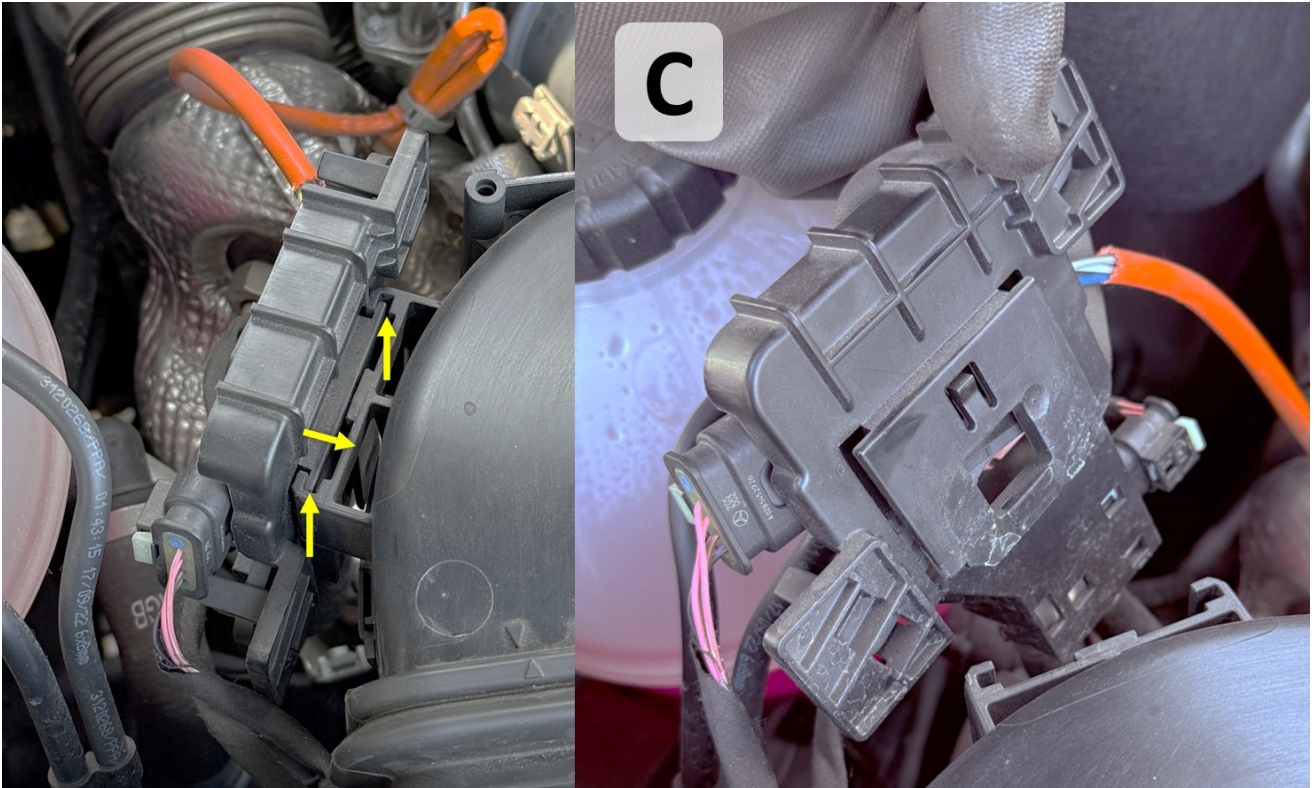
12-Volt Connection

Release the clip lock and pull straight out.



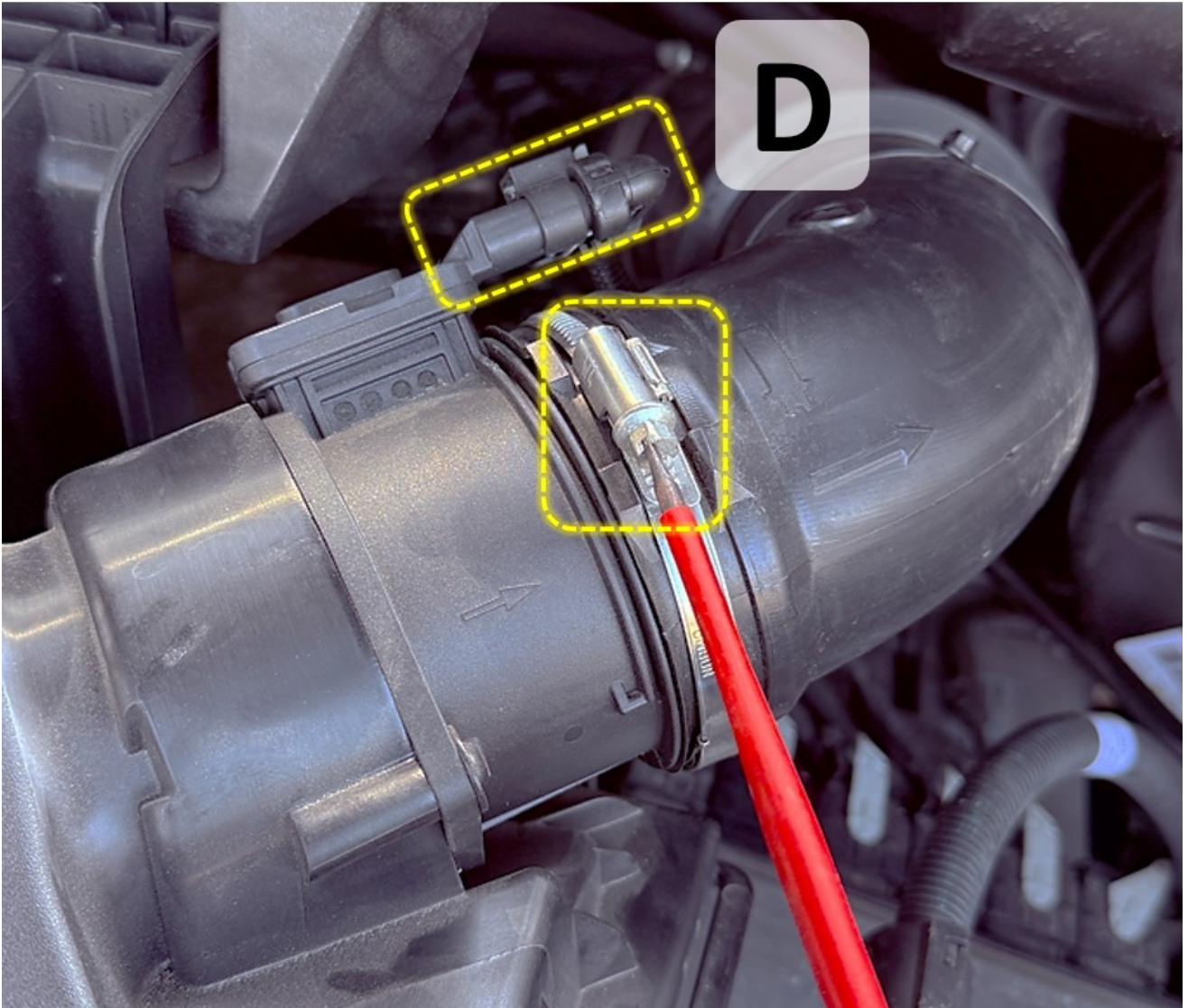
Connector unit

Release the clip lock and pull straight out.



Air intake & mass air flow sensor

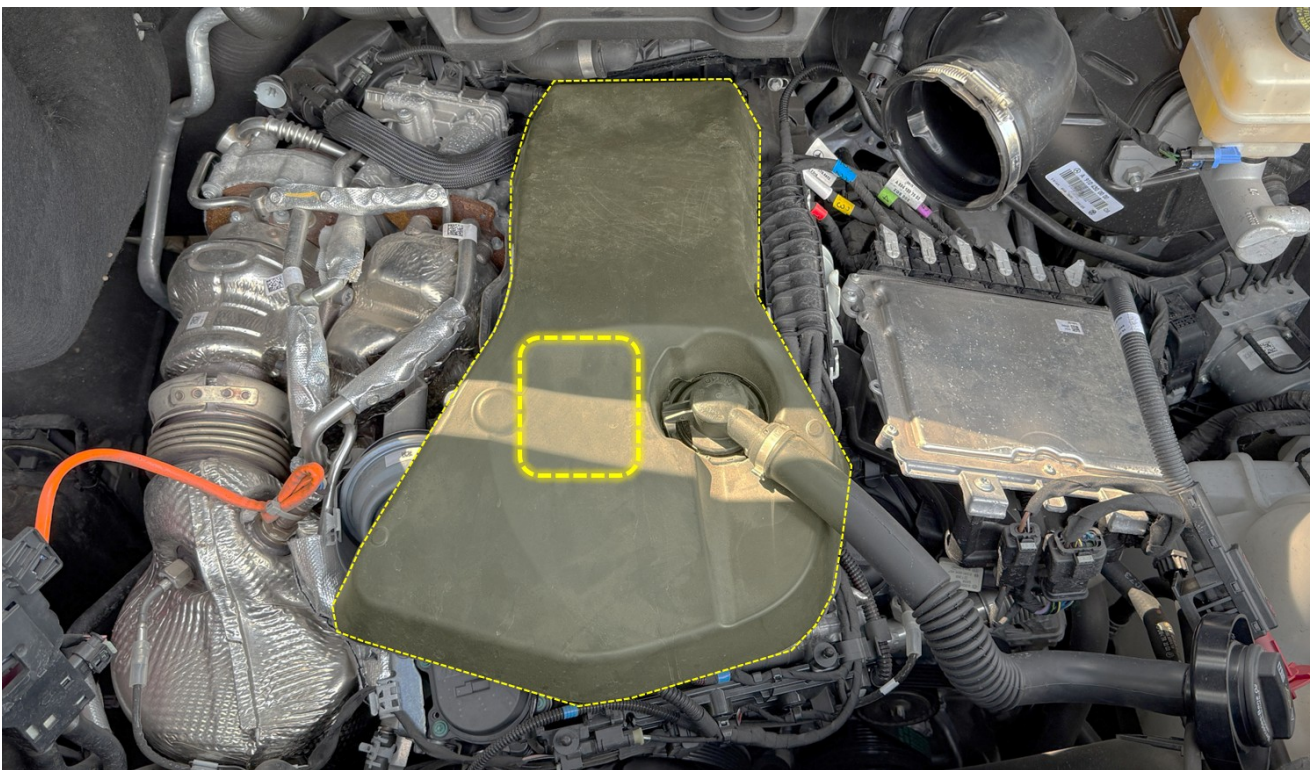
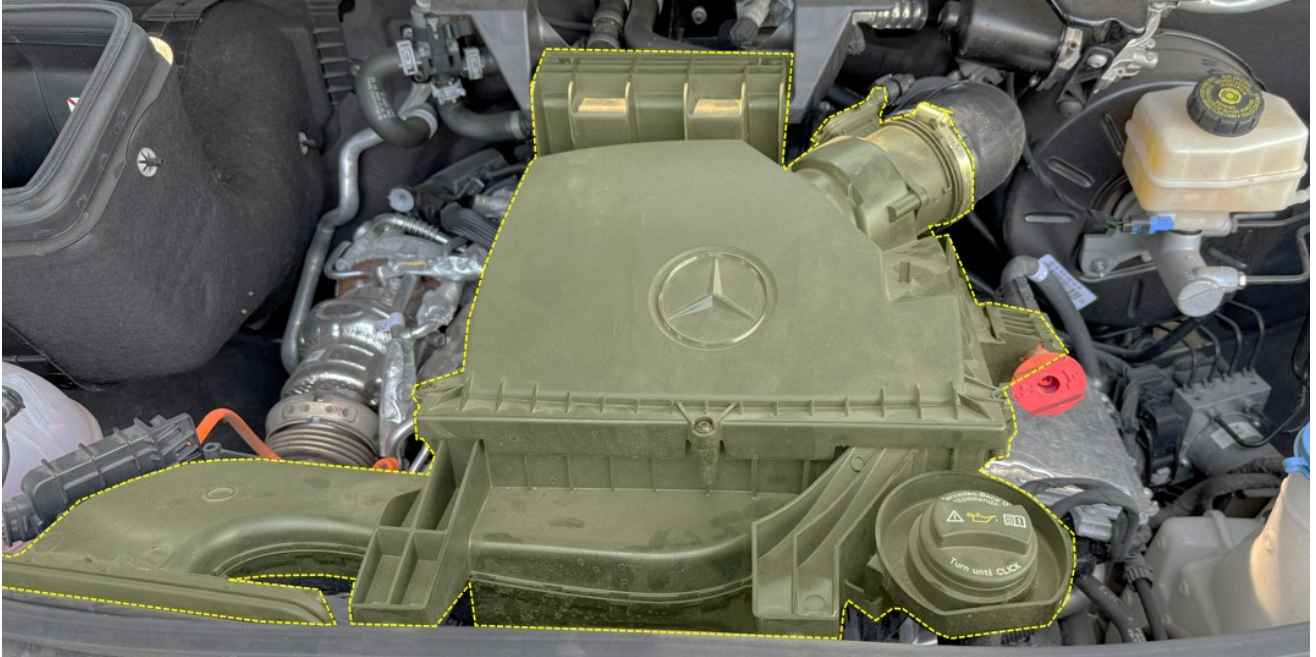
Loosen the hose clamp and disconnect the connector.



After removing these components, the air filter housing can be carefully taken out.

Locate the camshaft sensor

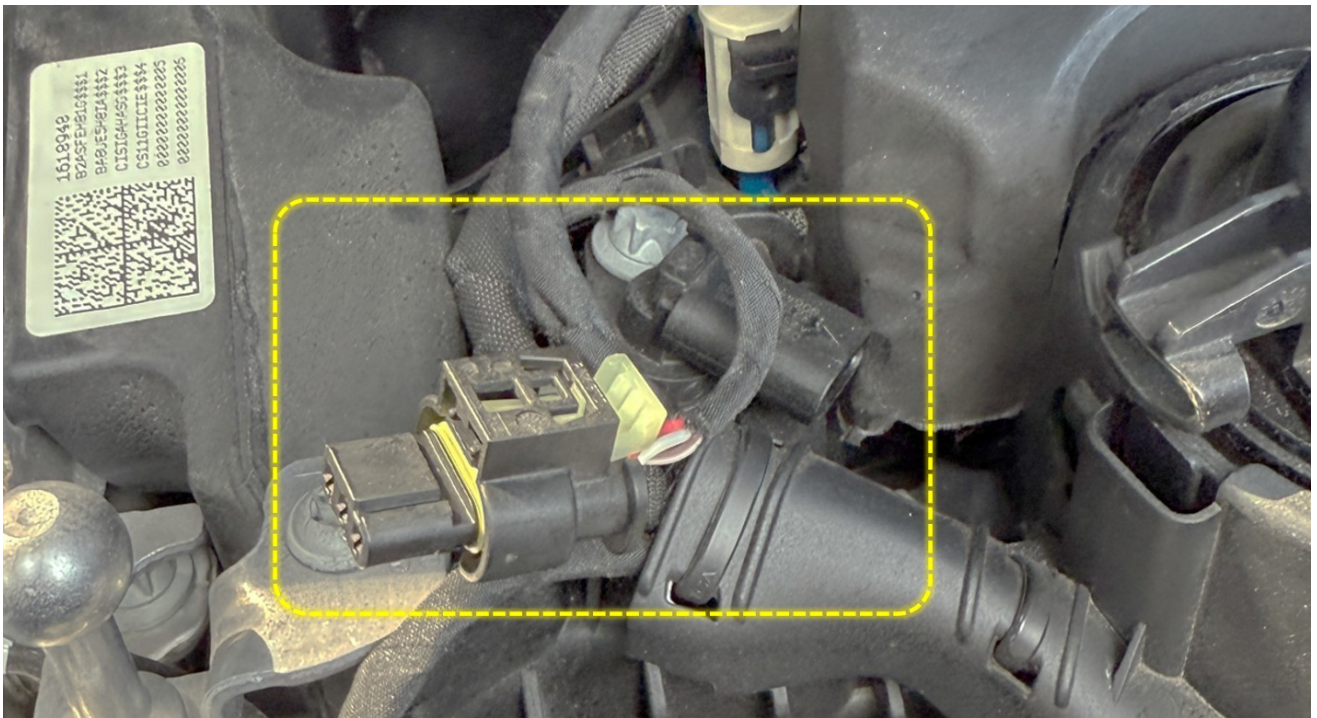
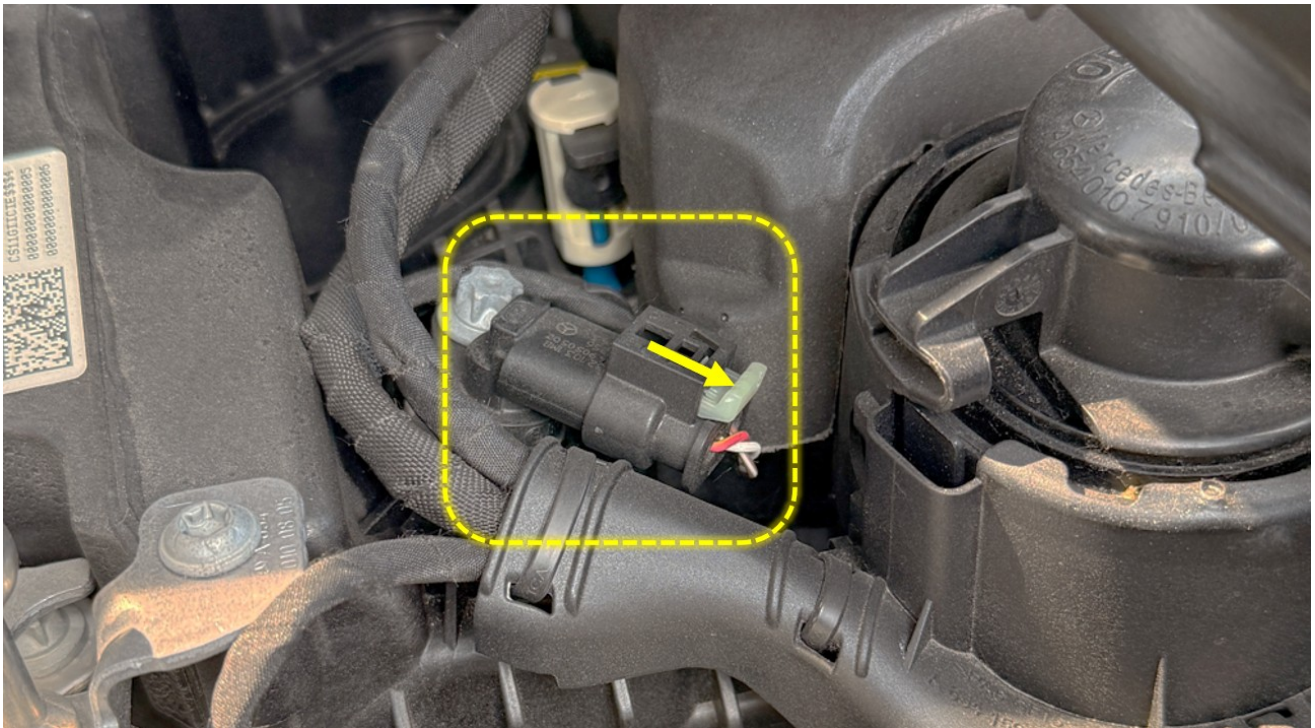
The camshaft sensor is located above the engine, beneath a rubber cover. Carefully lift the cover on the left side to gain access to the sensor.

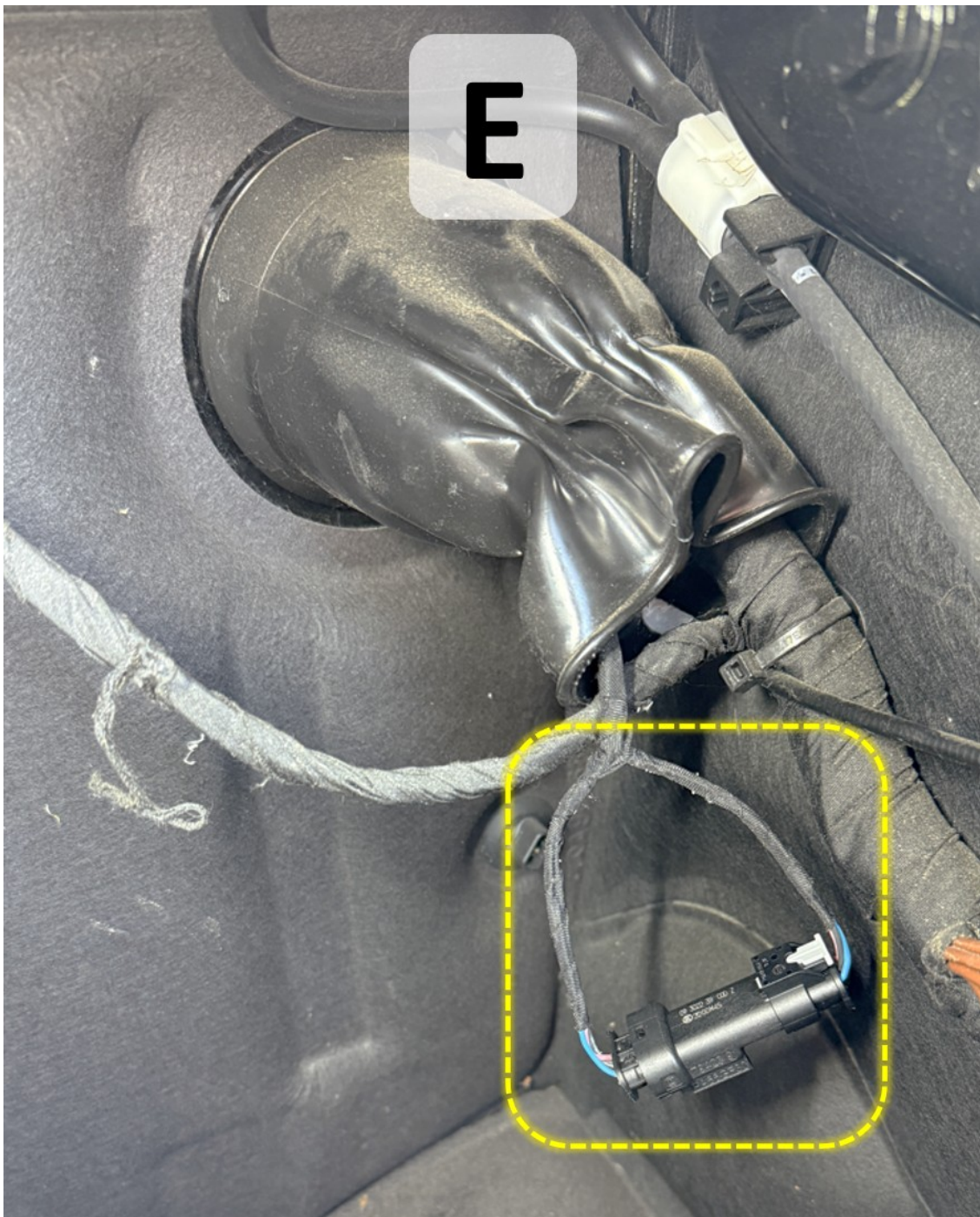


Connect the camshaft sensor and route the cable

Release the locking mechanism on the camshaft sensor and disconnect the connector.

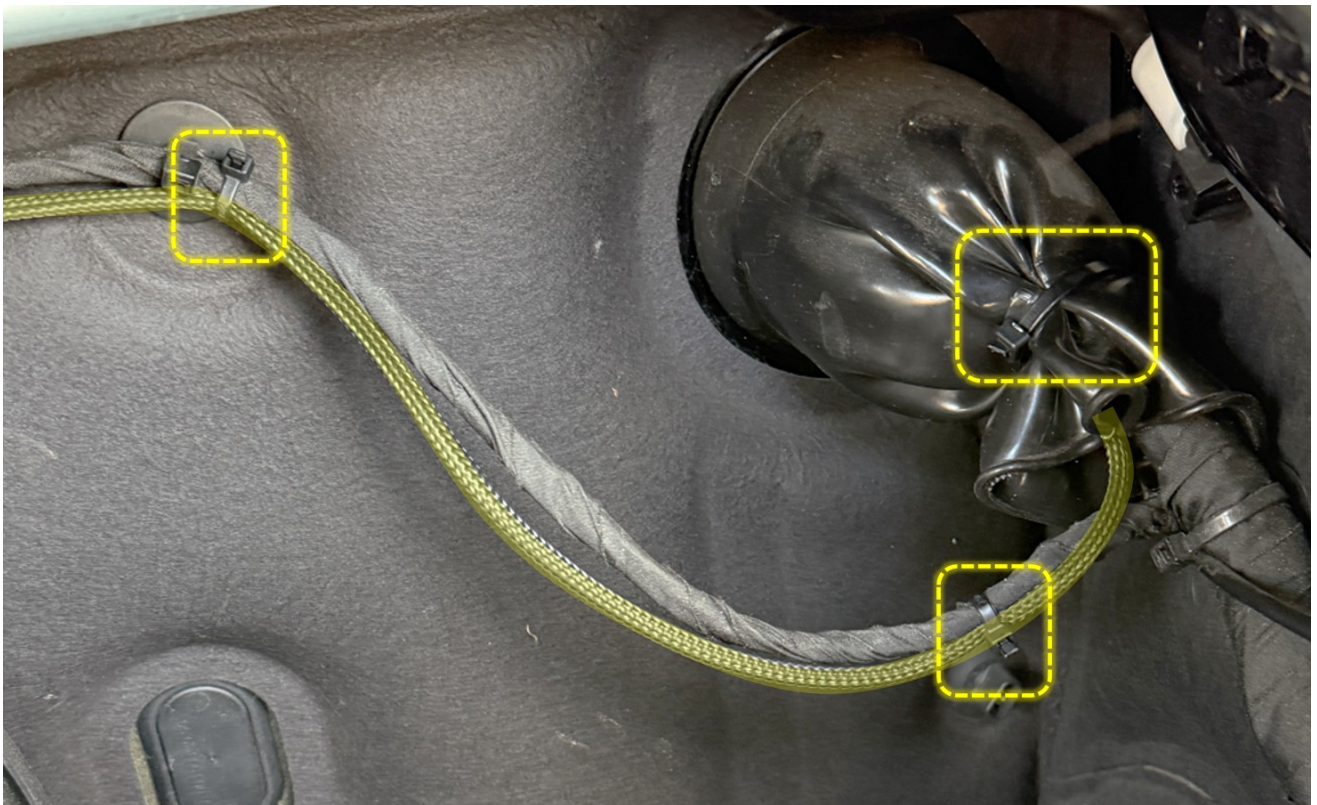






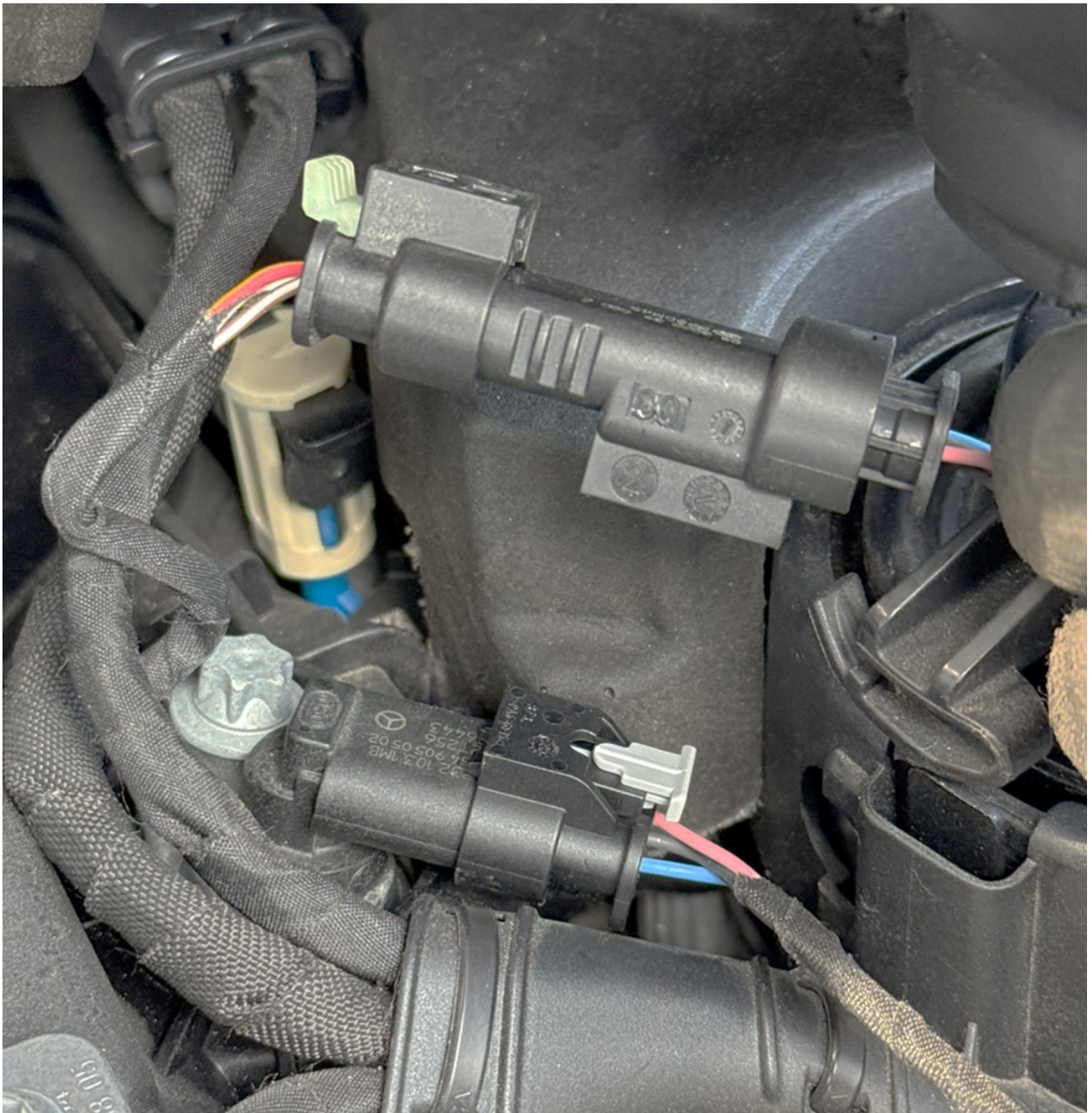
Route the camshaft sensor connector of the IOPEDAL cable adapter from the bulkhead grommet along the bulkhead to the sensor.

Secure the cable with cable ties, ensuring it does not come into contact with hot or moving components. Connect both plugs until the locking mechanism engages securely. Refer to the following example images for guidance.



Wichtiger Hinweis:

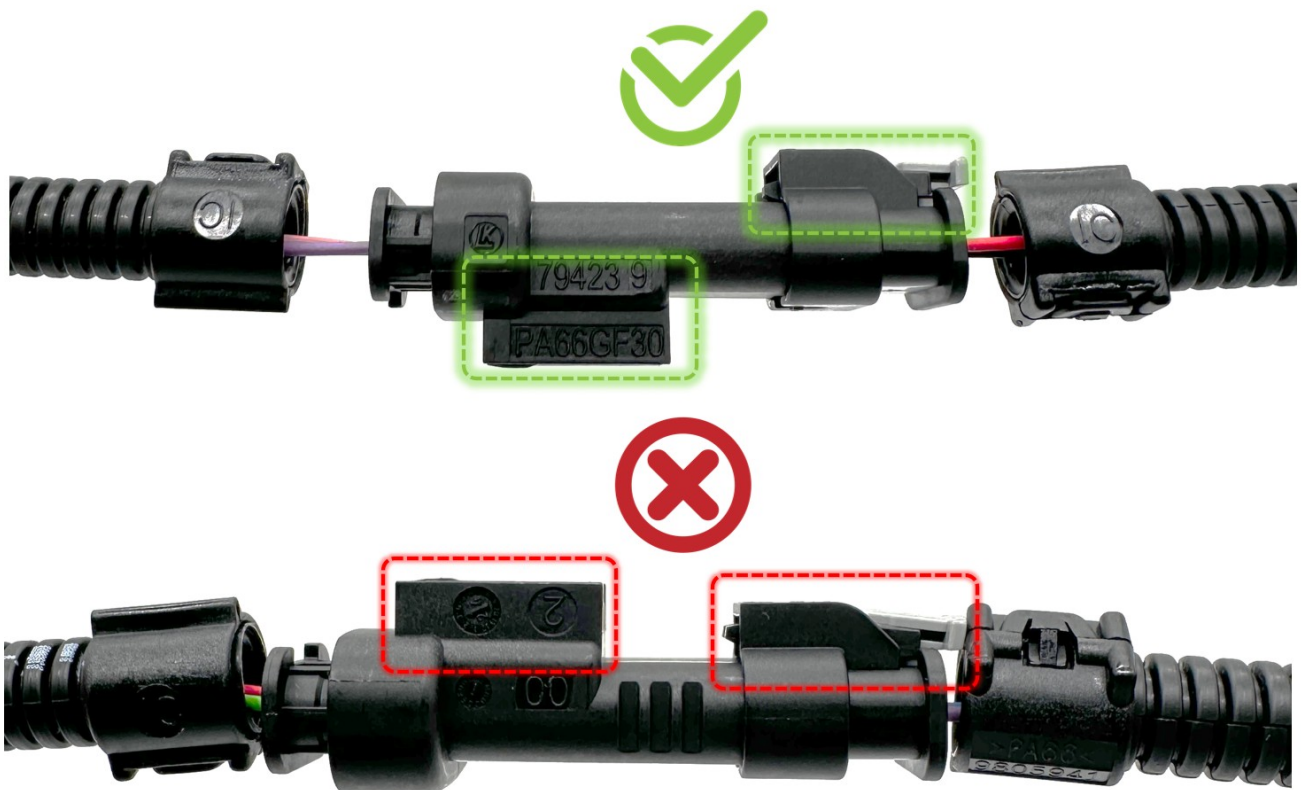
Ensure that the connectors are mated in the correct orientation. It is physically possible to connect these plugs when rotated 180°, which can lead to malfunction or damage. Therefore, it is critical to align and connect the plugs exactly as shown in the picture below.



Important Note: Pay Attention to Connector Orientation

Always ensure the correct orientation of the 3- and 4-pin connectors! Incorrect alignment can lead to malfunctions and even damage to the components. Carefully check before connecting that the plugs are properly aligned and securely attached.

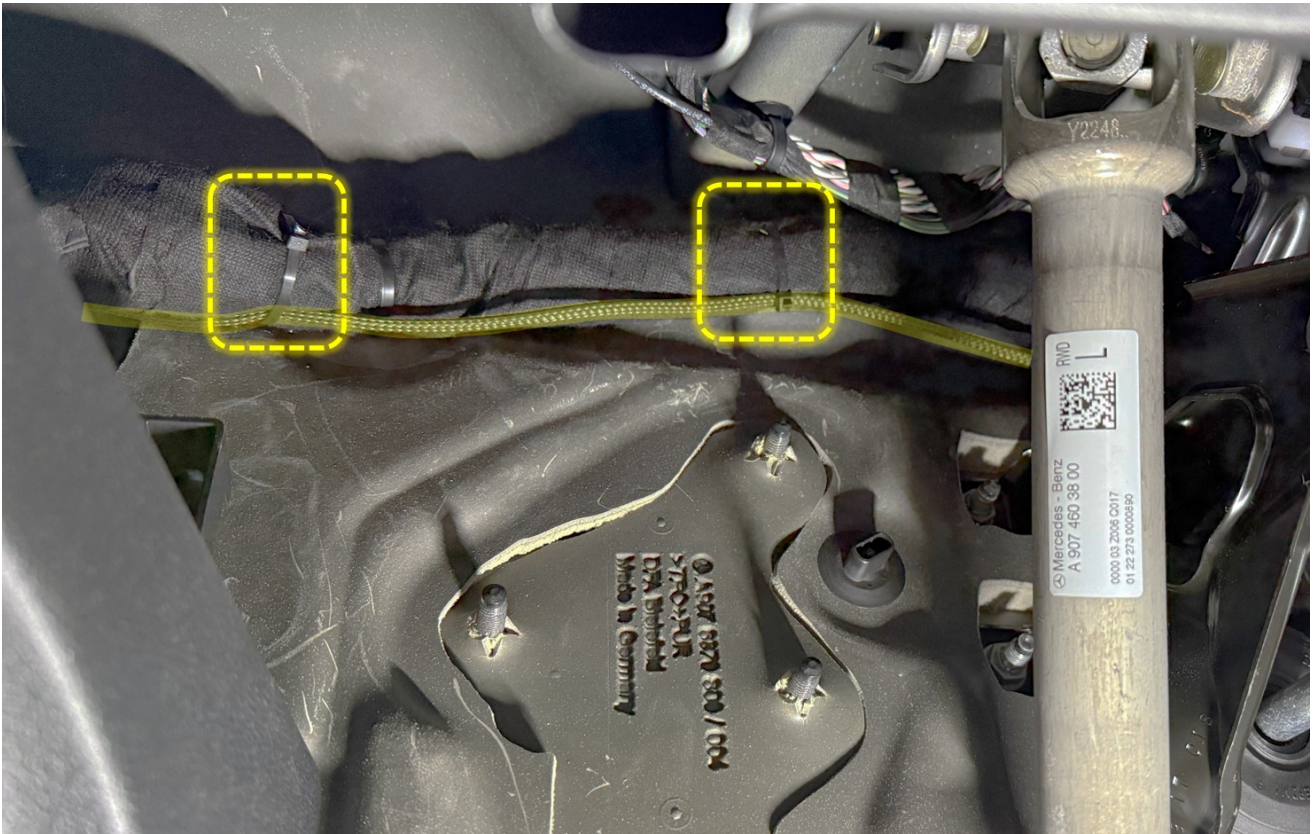
This step is crucial to avoid errors and defects and to ensure the reliable operation of the system.



Securing the IOPEDAL module and cable

Finally, securely fasten the IOPEDAL module and the cable adapter inside the vehicle cabin. Use cable ties to ensure a firm and vibration-free installation. Make sure that neither the module nor the cable is mounted near moving parts such as the steering column or the pedals. Refer to the example photos for correct positioning.





Teaching the IOPEDAL (Auto-Ranging Function)

First, make sure that the handbrake is engaged and the gear is in neutral or, for automatic transmissions, in "Park." Then switch on the ignition.



The IOPEDAL automatically starts the Auto-Ranging mode during initial startup (ignition on/engine running). In this mode, the system analyzes the signals from your accelerator pedal throughout its entire travel range and adjusts all driving modes in real time to match your vehicle's characteristics.



Procedure:

Press the accelerator pedal slowly all the way down to full throttle (including kick-down) and hold it in this position for approximately 2 seconds. Repeat this process twice.

The IOPEDAL is now fully configured, and the installation is complete.

For detailed information on all other functions and settings of the IOPEDAL, please refer to our general user manual: → [LINK](#)

Contact

The IOTuning support team is available during office hours.



Quick help or answers to your questions via WhatsApp :
[+49 231 5868 7250](tel:+4923158687250)



Email-Support: support@iotuning.com

For fast and efficient support, please include the following information in your initial request:

- Name, email address, phone number
- Sales invoice (PDF/image)
- Vehicle make, model, engine, and year of manufacture
- IOPEDAL, remote control, and wiring harness barcodes
- Photos of the accelerator pedal and connector
- Description of the issue

Imprint

IOTuning GmbH

Alten Ostbahnhof 38

44135 Dortmund

Germany

Managing Director: Andre Henkel

Tax number: 317/5913/3475

Commercial register entry: Dortmund HRB No.: 33020

VAT ID: DE343919967